

Someday changes

B^bΔ

D7 (#5)

E^bΔ7

G7 (#5)

C-7

G7 (#5)

C-7

F7

D-7

C[#]0

C-7

F7

D-7

C[#]0

C-7

F7

B^bΔ

D^(#5)7

E^bΔ7

G7 (#5)

C-7

G7 (#5)

C-7

F7

B^bΔ

C7 (#5)
e

E^bΔ7

E⁰7

B^bΔ/F
0

G7/F

C-7/F

F7¹
4

someday my prince will come. - wgn

Fsus



WYAS solo en someday

Handwritten musical notation on ten staves, organized into five systems of two staves each. The notation includes various chords and melodic lines.

Staff 1 (System 1): Chords: B^bΔ, D+, E^bΔ, G+

Staff 2 (System 2): Chords: C-7, D-7, C[#]0, C-7, F7

Staff 3 (System 3): Chords: D-7, C[#]0, C-7, F alt

Staff 4 (System 4): Chords: B^bΔ, D+, E^bΔ, G+

Staff 5 (System 5): Chords: C-7, G+, C-7, F7

Staff 6 (System 6): Chords: B^bΔ, D+, E^bΔ, E0

Staff 7 (System 7): Chords: BΔ/F, G7/F, C-7/F, B7

Staff 8 (System 8): Chords: B^bΔ, D+, E^bΔ, G+

Staff 9 (System 9): Chords: C-7, G+, C-7, F7

Staff 10 (System 10): Chords: D-7, C[#]0, C-7, F7

Staff 11 (System 11): Chords: D-7, C[#]0, C-7, F alt

MILWAUKEE DRIVE

Handwritten musical notation on five staves. The notation includes various chords and symbols:

- Staff 1: B^b7 , $D7$, E^b7 , $F7$
- Staff 2: B^b7 , $D7$, E^b7 , $F7$
- Staff 3: E^b7 , E^b7 , E^b7 , E^b7
- Staff 4: B^b7 , $A7$, A^b7 , $G-$
- Staff 5: $C-$, $C7$, $F-$, F
- Staff 6: A^b7 , A^b7 , $F^{\#3}$, $F alt$

F blues

Handwritten musical notation on three staves, continuing the sequence:

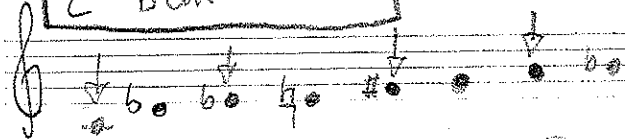
- Staff 7: $F7$, B^b7 , $F7$, $C7$, $F7$
- Staff 8: B^b7 , B° , F/C , F/B^b , $(E/A D-)$, $A-7$, $D7$
- Staff 9: $G-7$, $C7$, $F7$, $D7$, $G-$, $C7$

Handwritten musical notation on a single staff, featuring a wavy line and various chords:

- Staff 10: F/E , B^b7 , $G7$, $C7$, $F7$, $G7$

3 Scales. ↓ (shape notes)

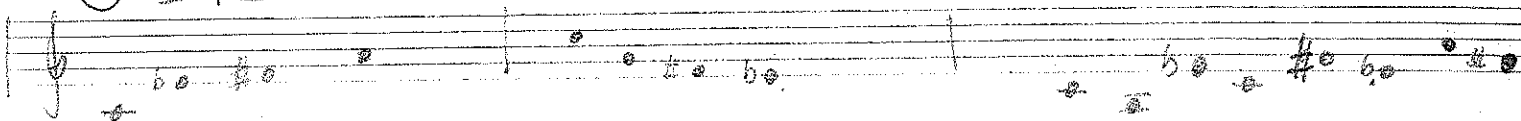
C Dim blues



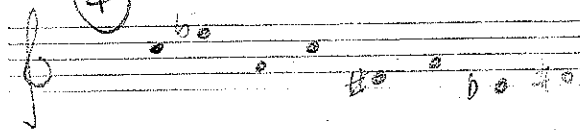
① shapes

②

③

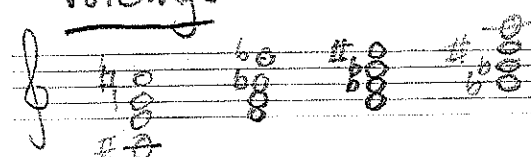


④

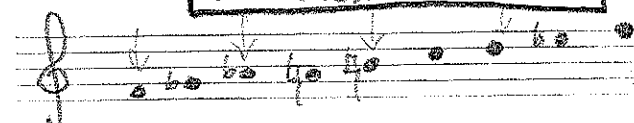


chords C7, Eb7, F#7, A7 || C° E° G° B°

Voicings



F dim blues

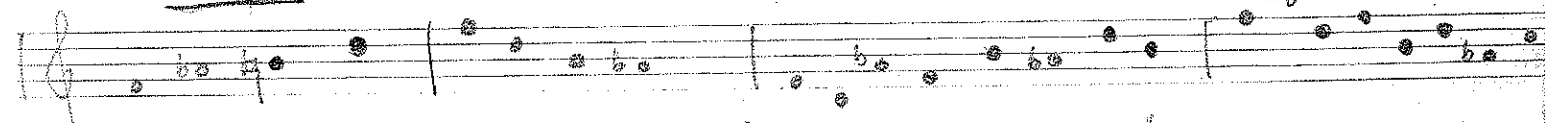


shapes

2

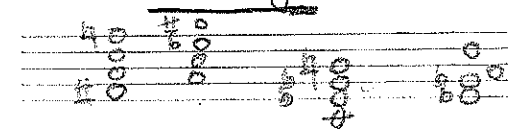
3

4

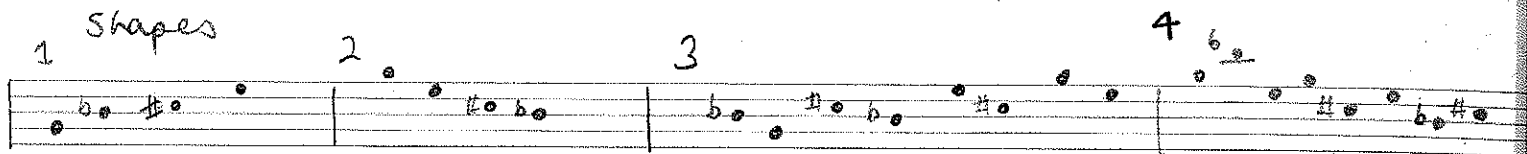
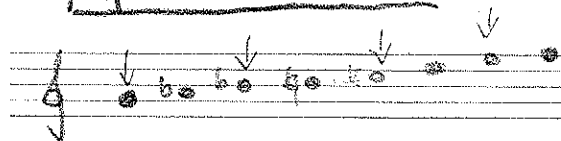


chords F7, Ab7, B7, D7, F#°, A°, C°, Eb°

Voicings



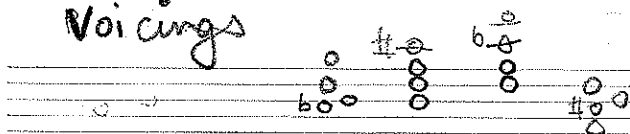
G dim Blues



chords

G7, B^b7, D^b7, E7, A^b7, B7, D7, F7

Voicings



PATTERNS

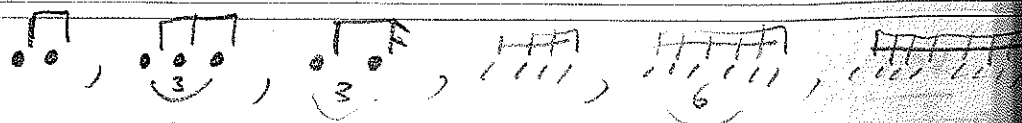
① Note Down tone ② Note up \sharp ③ ① 2 ② ④ ② 2 ①

⑤ Note down next 3 scale notes ⑥ Note up " 3

⑦ Δ triad up ⑧ Δ triad down ⑨ Δ triad up ⑩

Practise : every pattern on every ^{"shape"} row, L.H. raising

for these rhythms



Play scale in 3rds & 6ths

IMPROVISE around

G7	C7 ⁻⁹	/	FA	E7	A7 ⁻⁹	/	DA
A ^b -	D ^b 7-9		F [#] Δ	F7	B ^b 7-9	/	E ^b Δ
A-	D7-9		GΔ	F [#] -7	B7-9		EΔ
C [#] 7	F [#] 7 ⁻⁹	/	BA	B ^b -7	E ^b 7	/	A ^b Δ
D ^b -	G7 ⁻⁹	/	CΔ	B-7	E7-9	/	A [#] Δ
E-	A ^b 7-9	/	D ^b Δ	C-7	F7-9	/	B ^b Δ

BASS (VAMP
INTRO)

HERE & NOW

Sean
Waylan

(head)

G-7

C-7

C-7 / B^b

C-II D-II

D-7 / A

C-7 / G

F-7 / C

F / B^b

1 B^b 7 / C

2 D^b Δ 7

F-II

C / D B^b 7 / C

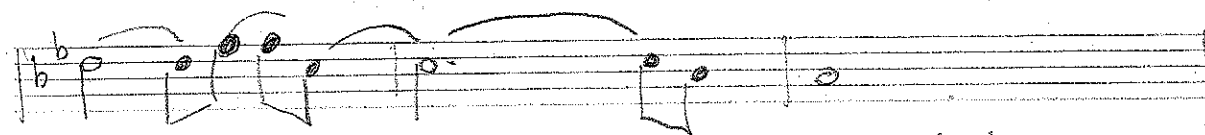
D.S.

etc
Vamp & fade

G-7

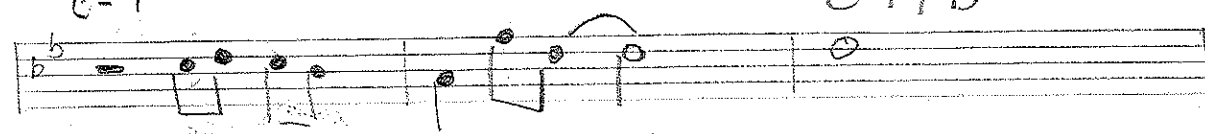
here & now

slow
way



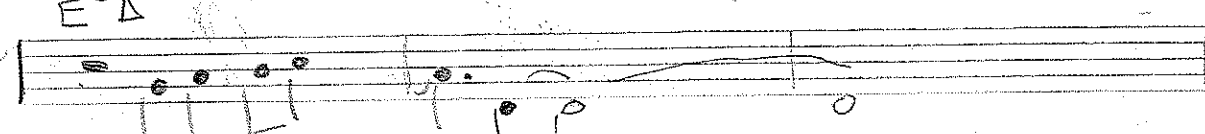
C-7

C-7/B^b



E^bΔ

Csus Dsus



D-7/A

C-7/G

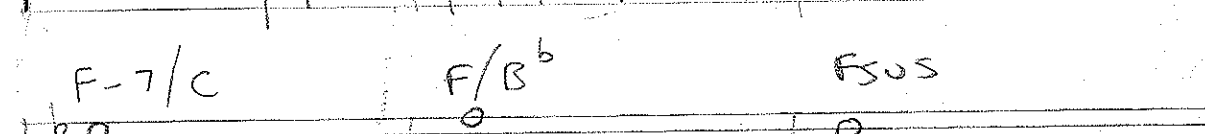


F-7/C

F/B^b

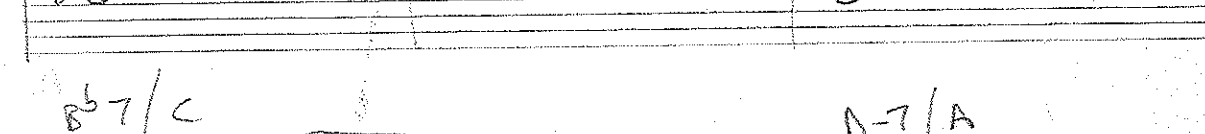
Fsus

C/D B^b7/C



B^b7/C

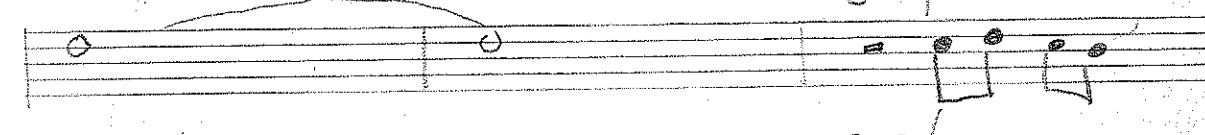
D-7/A



C-7/G

F-7/C

F/B^b

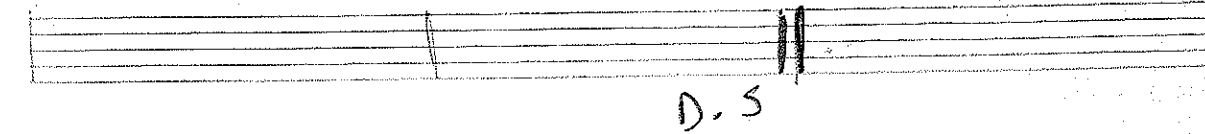
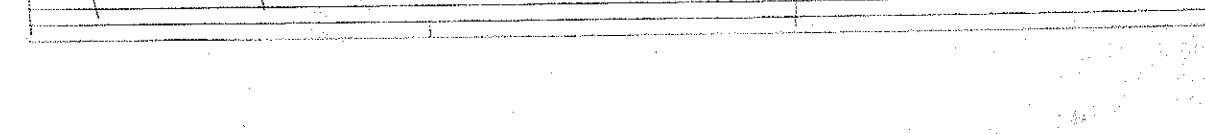
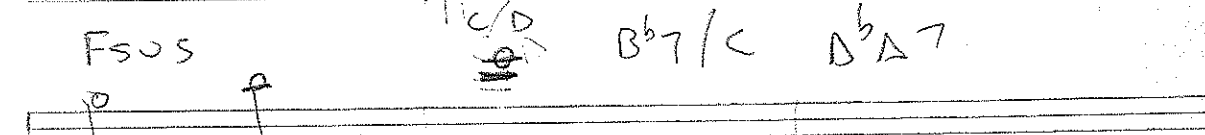
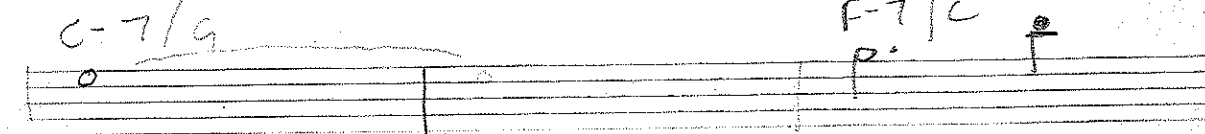


Fsus

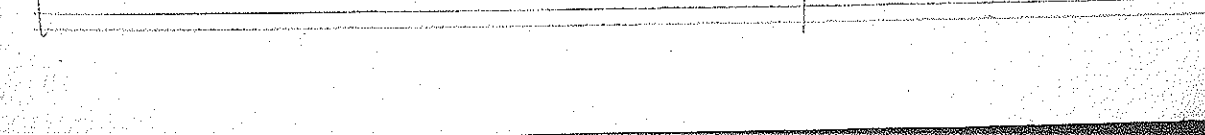
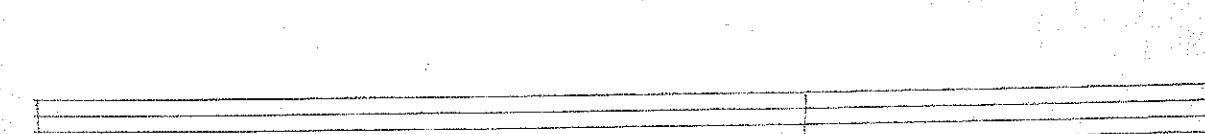
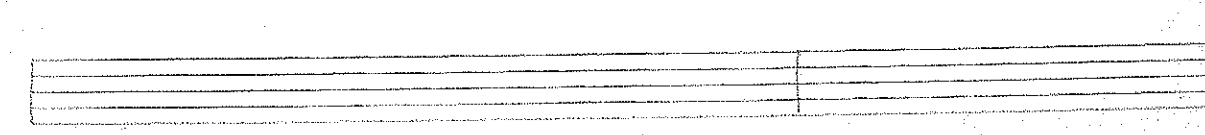
C/D

B^b7/C

D^bΔ7



D.S



B^b₉ D⁷_{alt} E^b₉ G⁷_{alt}

C-⁷ G⁷_{alt} C-⁷ F⁷

① D-⁷ C[#]₉ C-⁷ F⁷

D-⁷ C[#]₉ C-⁷ F⁷

B^b₉ F-⁷ B^b₉ E^b₉ (E^b A⁷_{alt})

D-⁷ G-⁷ C-⁷ F⁷

ϕ → 7^b9 → -6 (F⁷)

D ϕ[#] G⁷^b9 C-6 /

C ϕ F⁷^b9 B^b-6 (E^b 7)

B^b ϕ E^b 7^b9 A^b-6

Voicing

OR